

Making Policy – Making Social Research

Outward Looking Policy Making

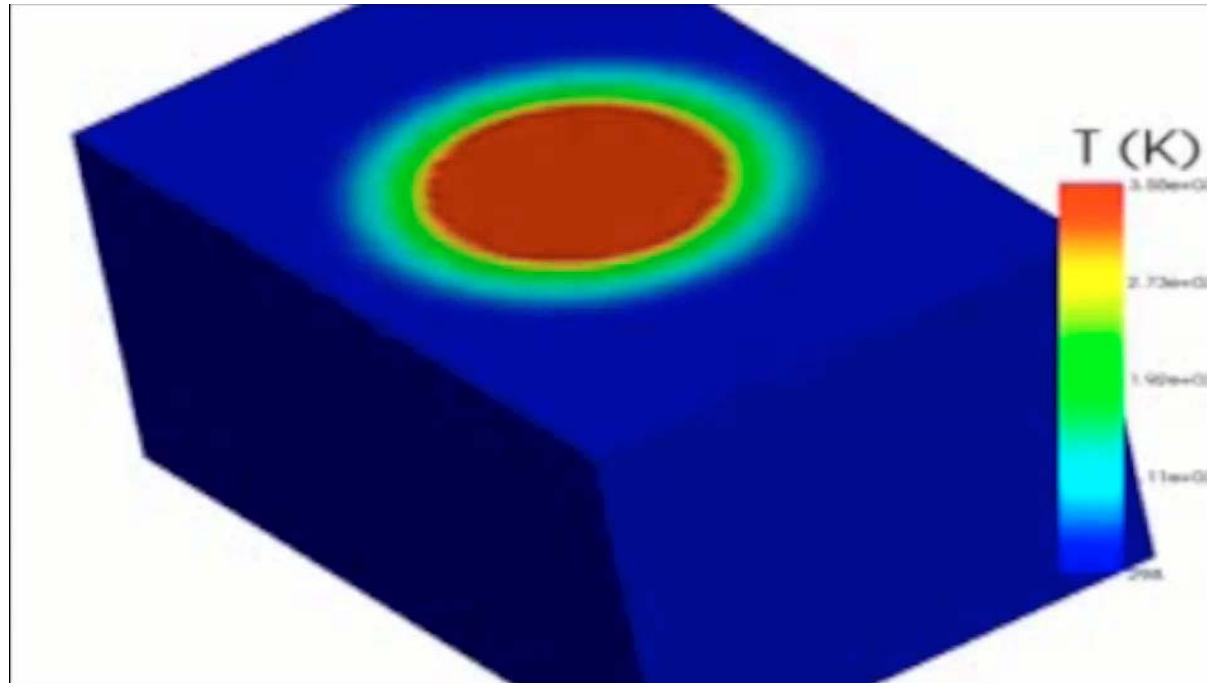
Edward C Page

Department of Government



THE LONDON SCHOOL
OF ECONOMICS AND
POLITICAL SCIENCE ■

Model One



Transfer Model

- Build a better mousetrap (e.g. Wisconsin model)
- New professional forums (e.g. Open Method of Coordination)
- Pressures from citizens (NHS, devolution)
- Leave aside problems in original

Model Two



No Place like Home

- Political, social, legal, economic and cultural systems are unique
- Cannot recreate conditions abroad
- Cross-national lesson drawing an illusion

Model Three



39 Steps (in Systematic Learning)

- Identify models to learn from
- Systematically examine evidence
- Learn what makes the model work
- Compare with conditions in host
- Extract lesson
- Apply lesson

See R Rose *Learning from Comparative Public Policy. A Practical Guide*, London, Routledge, 2005

Model Four



Hope and Anchor

- Policy makers use shortcuts “heuristics”
- Availability, representativeness, trust, anchoring
- Anchoring and the interaction with domestic policy and politics
- Degree to which lesson is anchored reflects correspondence between donor and host

See Kurt Weyland *Bounded Rationality and Policy Diffusion: Social Sector Reform in Latin America*, Princeton University Press, 2007

END